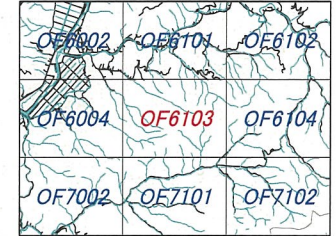
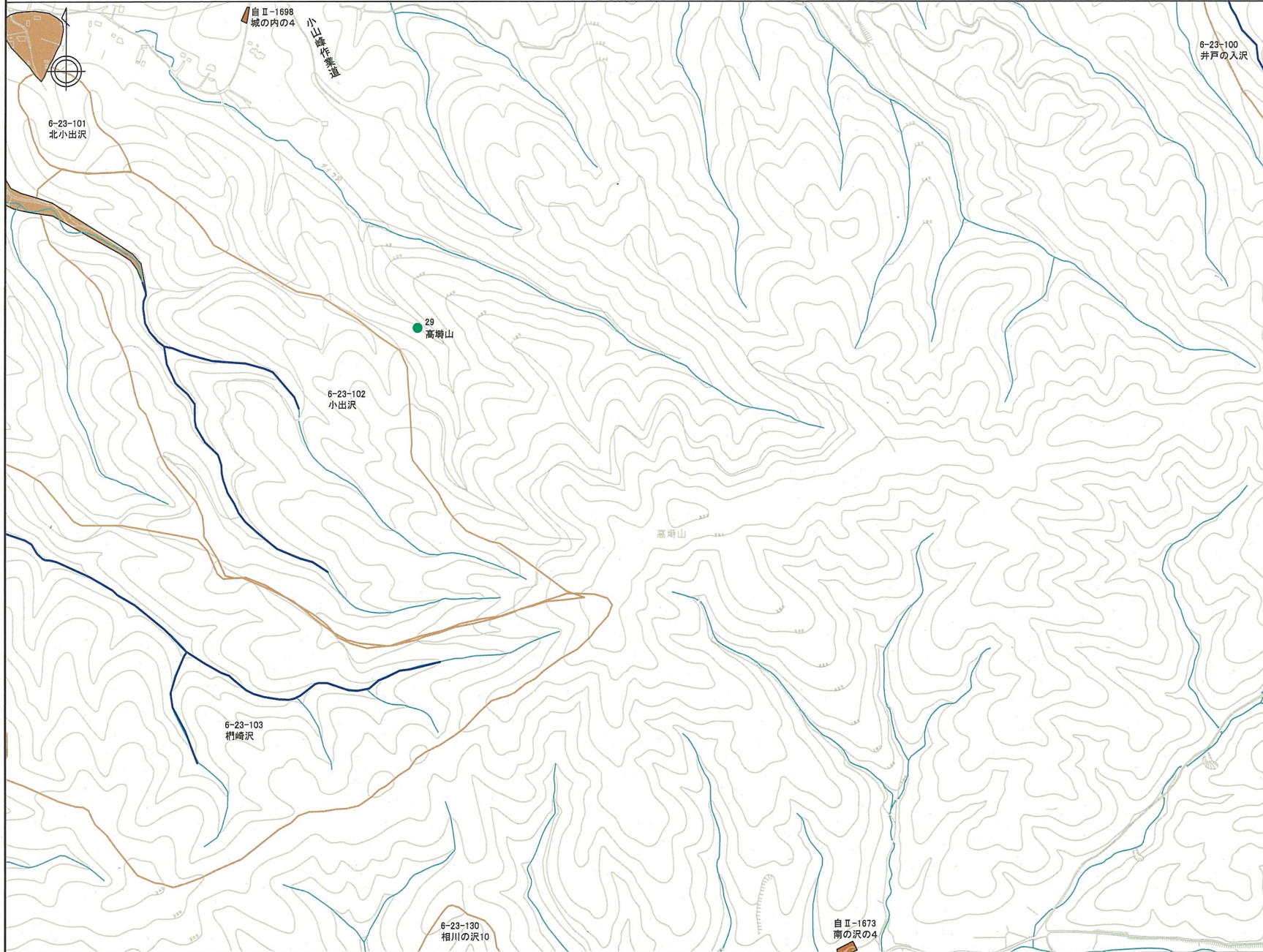


土砂災害危険箇所図 OF6103



東和町



凡 例


● 公共施設等

土石流



-  土石流危険溪流
-  土石流危険区域

水系


がけ崩れ(急傾斜地)

-  がけ崩れ
(急傾斜地崩壊危険箇所)

地すべり

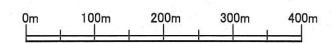
-  地すべりブロック
-  地すべり危険箇所
(治山地すべり危険区域を含む)

移動土塊の到達範囲

-  湛水域・氾濫区域

山腹崩壊

- 治山山腹崩壊危険地区



S=1:7500